

## Data sheet

A device for playing outdoors

Made based on the standard

PN-EN 1176-1:2017-12

Manufactured in Poland

## Technical data

- Device size:	4,61 x 1,91 m
- Total height:	5,55 m
- Impact area dimensions:	8,28 x 5,36 m
- Impact area:	33,75 m <sup>2</sup>
- Free fall height (HIC):	1,84 m
- Age:	7+



## Set contains:

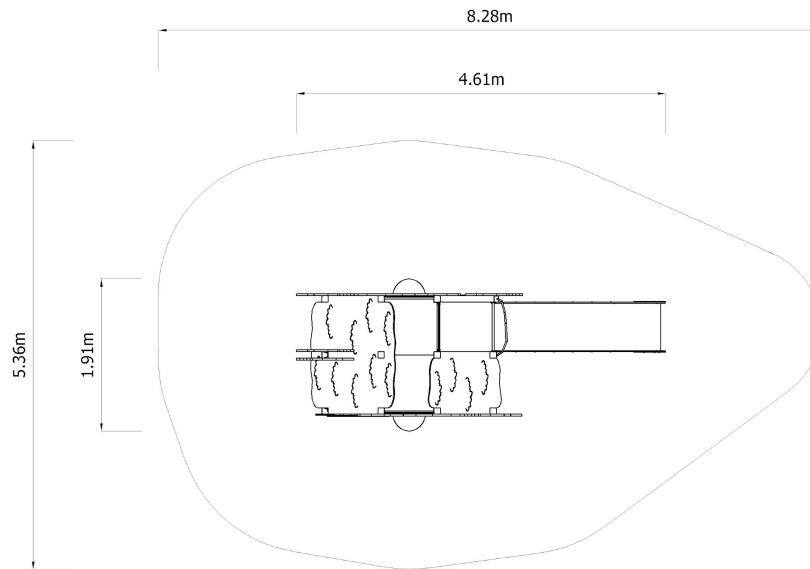
square platform  
slide

slanted entrance  
ladder entrance

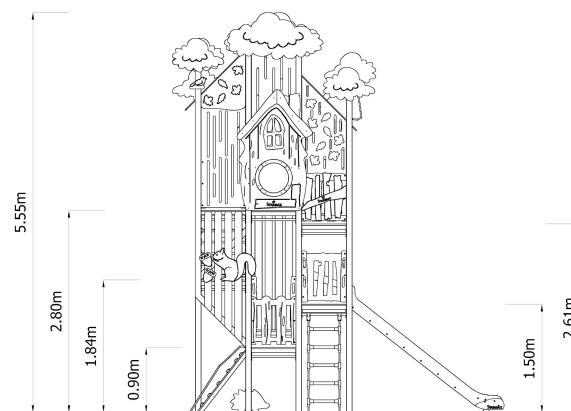
thematic applications  
bar/ladder



## Device and impact area dimensions



## Height



## Material specification:

Slide:	stainless steel
Platform:	stainless steel and weatherproof non-slip HDPE
Barriers:	weatherproof HDPE
Roof:	weatherproof HDPE
Lines:	polypropylene with steel core
Connections:	stainless steel
Applications:	weatherproof HDPE
Anchor:	devices permanently anchored in the ground on a concrete foundation of min. C20/25, 80 cm below the ground level

## Impact attenuating surface:

It is required to make one of the impact attenuating surface:

- Sand – 0,2 - 2 mm grain size, depth min. 300 mm,
- Gravel – 2 - 8 mm grain size, depth min. 300 mm,
- Bark – 20 - 80 mm particle size, depth min. 300 mm,
- Woodchips – 5 - 30 mm particle size, depth min. 300 mm,
- Other materials and other depths as tested according to EN 1177